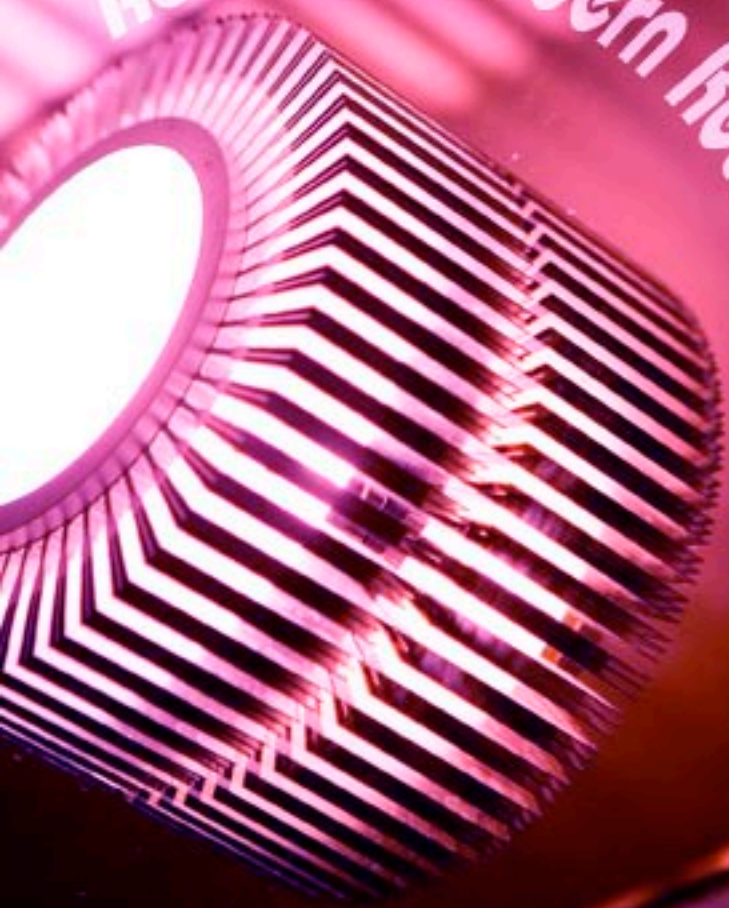




Re!!ax in Modern Retro Comfort





## Hotel Re! @ Pearl's Hill

As you step into Hotel Re!, you are lost in swirls of vivacious colours and psychedelic furnishings tempered with a sleek modern touch. With 12 storeys and 140 rooms, Hotel Re! is a wonderful surprise yearning to be discovered.

Situated at the base of Pearl's Hill, on Chin Swee Road, Hotel Re! encloses guests in a serene and scenic environment whilst being just a stone's throw away from attractions like Chinatown, Clarke Quay and the famous shopping district, Orchard Road. Hotel Re! is within vicinity of major tourist attractions in the city, enabling guests to move around the city at their own leisurely pace.

Shuttle bus transport service is also provided for the convenience of guests.



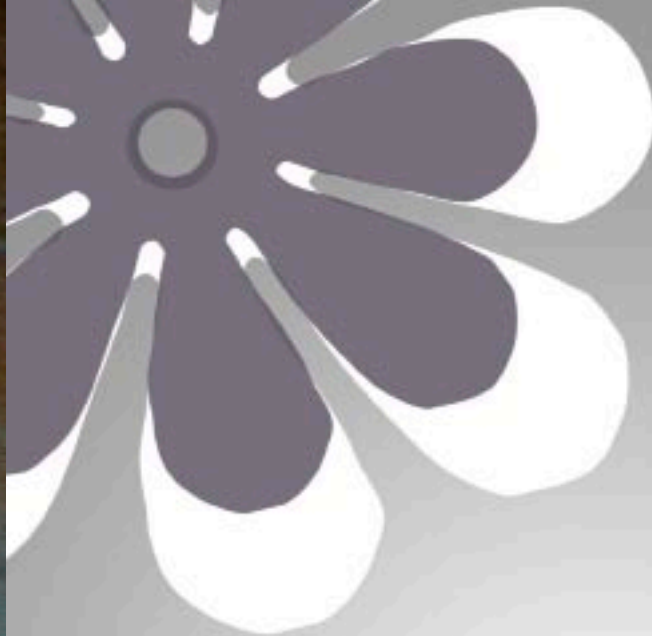
# Celebrating the New & the Re!tro

All guestrooms are furnished with unique retro inspired furniture and complimented with ultra modern technology to provide guests with a sense of comfort at Hotel Re!.

The glittery mosaic-tiled bathrooms supplemented with L'Occitane amenities complete the entire setting and the whole new experience.

Hotel Re!'s structure was formerly a primary school, Pearl's Hill Primary and later in 2001, was replaced by the Stamford Student Residence. It is also the first former school building tendered out by the Singapore Land Authority for hotel use.





# Re!ax with Us

There are 7 room categories in Hotel Re!

	Rack rates
- Themed Suite .....	SGD 750
- Family Suite .....	SGD 700
- Business Room .....	SGD 550
- Executive Room .....	SGD 480
- Premier Room .....	SGD 420
- Deluxe Room .....	SGD 350
- Superior Room .....	SGD 320

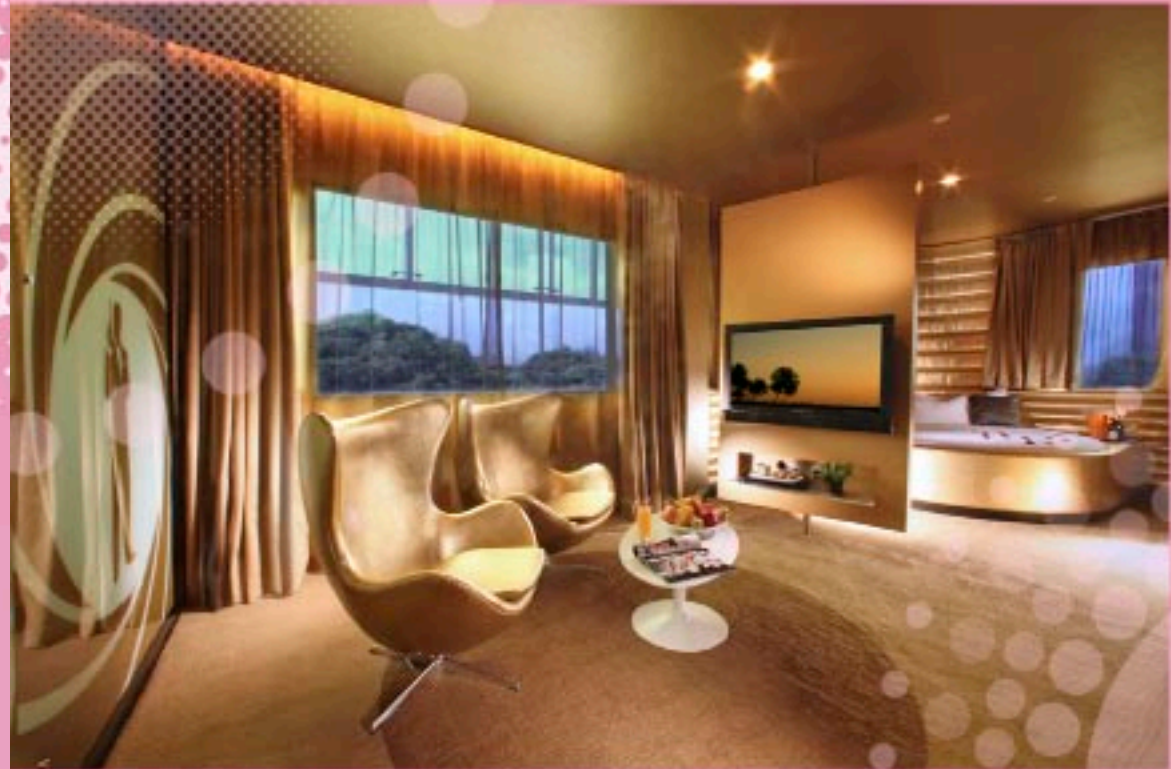
# Themed Suite

Hotel Re! boasts 3 splendid Themed Suites. Each suite is decked out in Gold, Silver or Bronze furnished with waterbeds and open concept bathrooms. They are excellent for a splendid night of romance and felicity.

Size: 35 sqm

## Amenities:

- Jacuzzi bath tub
- Separate shower and toilet area
- Premium rainshower system in shower area
- L'Occitane toiletries
- King size round water bed
- Revolving console with 42-inch LCD TV & DVD player
- Complimentary Cable TV channels
- Complimentary 24-hours WIFI
- Digital in-room safe
- Mini-Bar
- Iron & board / baby cot (Upon request)
- Laundry & dry cleaning services





## Business Room

Glorious views of the city and Pearl's Hill Park through 2 windows make the 10 Business Rooms in Hotel Re! unique and exclusive. The bathroom offers guests a clear view of the city scope through a 3rd window as they soak in our luxurious bathtub.

Size: 24 sqm

**Amenities:**

- Queen sized beds available
- Bathtub
- L'Occitane toiletries
- 42-inch LCD TV
- Complimentary Cable TV channels
- Complimentary 24-hours WIFI
- Digital in-room safe
- Mini-Bar
- Iron & board / baby cot (Upon request)

Experience Hotel Re!'s 2 wholesome Family Suites. Each suite boasts 2 separate bedrooms and a spacious common living area, perfect for the family seeking some privacy during their stay.

Size: 35 sqm

**Amenities:**

- 1 Queen bed and 2 twin beds
- Bathtub
- 42-inch LCD TV and DVD player
- Complimentary Cable TV channels
- Complimentary 24-hours WIFI
- Digital in-room safe
- Mini-Bar
- Iron & board / baby cot (Upon request)
- Laundry & dry cleaning services

## Family Suite



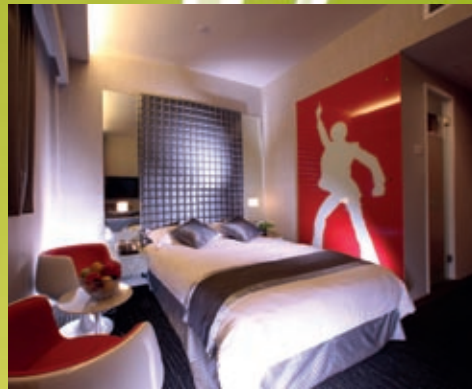
Savour the stunning city view in Hotel Re!'s vibrant Executive Rooms.

Size: 20 sqm

**Amenities:**

- Queen size bed
- Bathtub
- L'Occitane toiletries
- 37-inch LCD TV
- Complimentary Cable TV channels
- Complimentary 24-hours WIFI
- Digital in-room safe
- Mini-Bar- Iron & board / baby cot (Upon request)

## Executive Room



Hotel Re!'s Deluxe Rooms overlook the peaceful city park treating guests with idyllic views of nature in her green splendor.

Size: 18 sqm

**Amenities:**

- Double or twin beds available
- Standing shower
- 37-inch LCD TV
- Complimentary Cable TV channels
- Complimentary 24-hours WIFI
- Digital in-room safe
- Mini-Bar
- Iron & board / baby cot (Upon request)
- Laundry & dry cleaning service

## Deluxe Room



Premier Rooms at Hotel Re! await to pamper our guests with breathtaking views of the city scape.

Size: 28 sqm

**Amenities:**

- Double and triple beds available
- Premium rainshower system in the bathroom
- 42-inch LCD TV
- Complimentary Cable TV channels
- Complimentary 24-hours WIFI
- Digital in-room safe
- Mini-Bar
- Iron & board / baby cot (Upon request)
- Laundry & dry cleaning service

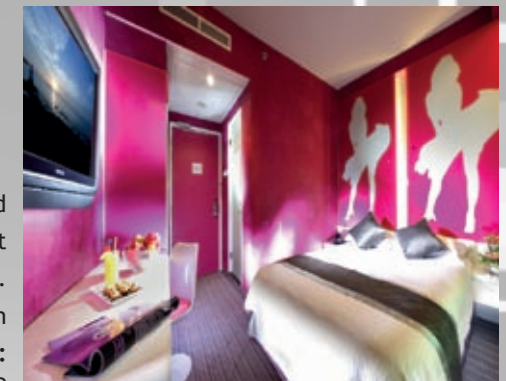
## Premier Room

Great things come in small packages. Our modest and cozy Superior Rooms are packed with our decadent furnishings and amenities.

Size: 14 sqm

**Amenities:**

- Double or twin beds available
- Standing shower
- 37-inch LCD TV
- Complimentary Cable TV channels
- Complimentary 24-hours WIFI
- Digital in-room safe
- Mini-Bar
- Iron & board / baby cot (Upon request)
- Laundry & dry cleaning service



## Superior Room



## Re!Fresh with our pampering treats

Located on the ground floor of Hotel Re!, enjoy pampering treats in our one-stop wellness centre Re!Fresh.

Services available include:

- Manicure & Pedicure
- Facial
- Head, Shoulder & Foot Massage
- Full Body Pressure Point Massage
- Hydrobath

Services are strictly by appointment only and open to public.

Opening Hours: 11am to 10pm daily

Please call 6827 8288 for enquiries and appointments.





# EVENTS @ Hotel Re!

Hotel Re! is proud to offer a suite of function spaces for events ranging from cosy get-togethers, business meetings and grand banquets. Our events team is always on hand to provide innovative and customizable solutions to all your event needs.

## Re!Joice - Ballroom

Housed in a permanent marquee set in lush outdoors. Fully air-conditioned and pillarless ballroom allows guests to have a clear view of the stage in this high-ceilinged interior. With the adjoining cozy reception area, Re!Joice is truly a unique venue for your events needs.

## Re!Union - Function Room

Re!Union is ideal for medium sized functions for up to 120 people. A wide range of set-up options is available for selection. The rental of a Karaoke system is available. All other audio-visual equipments are provided too.

## Re!Tune & Re!Call - Meeting Rooms

Re!Tune and Re!Call are perfect venues for small-sized corporate meetings or brainstorming sessions.





Hotel Re!'s breezy chillout alfresco bar perched on our 2nd level balcony.

A wide selection of beverages and fine wines await guests who come by to simply release any inhibitions from the day and enjoy a glass of alcoholic or non-alcoholic beverage on a quiet evening. The alfresco area is also a perfect venue to host informal cocktail parties and networking sessions.

## Re!Wine Bar

Happy Hour at the bar starts from 4pm and ends at 8pm daily.

Opening Hours: 4pm to 12mn daily

The Relal escape

Please call 6827 8228 for reservations.

Re!lish a wide variety of sumptuous international cuisine at Re!Fill, Hotel Re!'s dedicated restaurant. Accompanied by the peaceful environment of the serene city park, guests are given the privilege of savouring their meals without rushing through them.

Re!Fill serves up a breakfast buffet daily from 7am to 10 30am. Guests are able to make their selections from our ala carte menu for lunch and dinner. Other highlights include a selection of freshly baked thin crust pizzas and freshly squeezed juices. International themed set meals and buffets are also available daily for lunch and dinner.

All dishes are prepared with no pork and no lard.

Opening Hours: 7am to 11pm daily

Please call 6827 8228 for reservations.

**Re!Fill**  
All day casual dining





## Contact Us

Reservations Hotline: +65 6827 8288

Reservations Email: [reservations@hotelre.com.sg](mailto:reservations@hotelre.com.sg)

Sales Enquiry Email: [sm@hotelre.com.sg](mailto:sm@hotelre.com.sg)

Events Enquiry Email: [events@hotelre.com.sg](mailto:events@hotelre.com.sg)

Hotel Re! Pte Ltd  
175A Chin Swee Road  
Singapore 169879

Tel: +65 6827 8288  
Fax: +65 6827 8289

Website: [www.hotelre.com.sg](http://www.hotelre.com.sg)  
Facebook: [www.facebook.com/HotelRe](http://www.facebook.com/HotelRe)  
Twitter: [www.twitter.com/HotelRe](http://www.twitter.com/HotelRe)

A partner of Epoque Hotel, Avantgarde line

# Additional Information





Hotel Re! Pte Ltd  
175A Chin Swee Road  
Singapore 169879

Tel: +65 6827 8288  
Fax: +65 6827 8289

[www.hotelre.com.sg](http://www.hotelre.com.sg)

(Co. Reg. No. 200716260E)